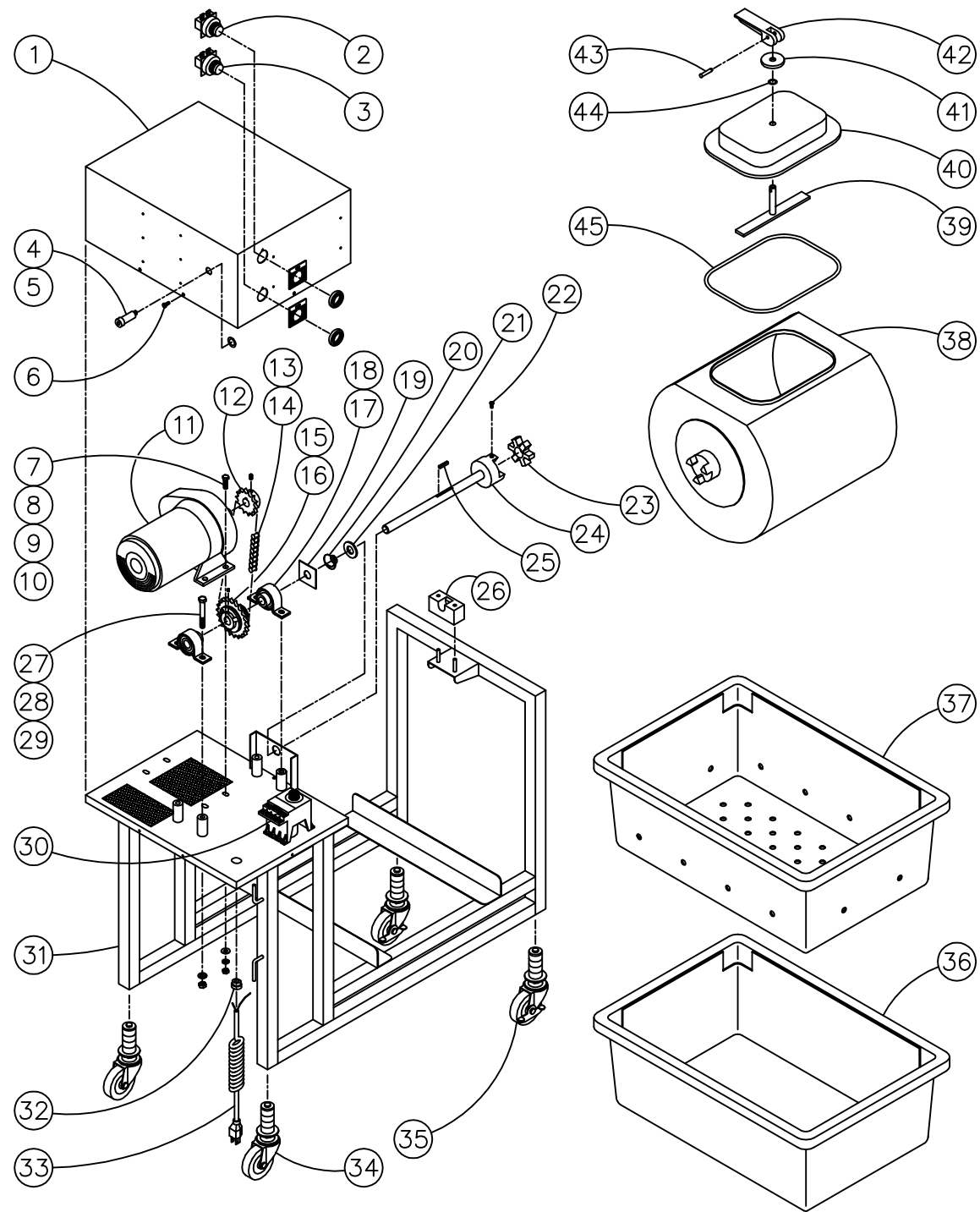


REV	ZONE	DESCRIPTION	BY	DATE	REL	ECN
-		INITIAL RELEASE	G.K. / T.W.	8/26/98		
A		Update for S/S Hardware Change	JAS	7/18/01		



39-44	# 202418	- Assy, Door Lid -New- Items 39-44	1
45	# 900036	- O-Ring, Old Style - (15 Minute Lid)	1
45	# 902338	- O-Ring, New Style - (10 Minute Lid)	1
44	# 900035	- Washer, Rubber 1/2 ID	1
43	# 12SS-07	- Pin, S/S Quick Release (A)	1
42	# 200225	- Handle, Cam	1
41	# 200089	- Washer, Handle Delrin	1
40	# 202414	- Door, Marinator - New -	1
39	# 202420	- Latch Assy, Marinator - New -	1
38	# 200104	- Tank Sub Assy	1
37	# 200912	- Tray, Marinator Drain (w/holes)	1
36	# 900080	- Container, Polyethelene Max Box	1
35	# 900031	- Caster, 3 Brake, Stem, Swivel	2
34	# 900032	- Caster, 3 Stem Swivel	2
33	# 200323	- Assy, Cord Set	1
32	# 900053	- Bushing, Electric Restrainer	1
31	# 200109	- Frame Assy, Marinator	1
30	# 910102	- Timer, Electric 220V AC	1
30	# 900054	- Timer, Electric 120V AC	1
29	# 902460	- Nut, 3/8-16 S/S Hex (A)	4
28	# 902459	- Washer, 3/8" S/S Split Lock (A)	4
27	# 902433	- Bolt, 3/8-16 x 2.5 S/S Hex Head (A)	4
26	# 200108	- Bearing, Delrin Marinator	1
25	# 200125	- Key, Marinator Shaft	1
24	# 200122	- Assy, Coupling & Shaft	1
23	# 900061	- Bearing, Spider	1
22	# 902432	- Screw, 8/32 x 1/4 S/S Machine (A)	1
21	# 200126	- Seal, Shaft (Marinator)	1
20	# 900033	- Spring, For Marinator	1
19	# 200127	- Spring Plate, Marinator	2
18	# 900042-1	- Housing, Pillow Block	2
17	# 900042	- Bearing, Pillow Block 3/4	2
16	# 900137	- Sprocket, Torque Limiter Plate	1
15	# 900039	- Bearing, Torque Limiter w/Set Screw	1
14	# 900237	- Link, # 40 Connecting	1
13	# 900041	- Chain Roller 1/2 Pitch	1
12	# 900058	- Sprocket, 3/4 Plated W/Set Screw	1
11	# 910210	- Motor, Marinator - 220V AC	1
11	# 900063	- Motor, 1/4 HP - 120V AC	1
10	# 902449	- Nut, 5/16-18 S/S Hex (A)	4
9	# 902450	- Washer, 5/16 S/S Split Lock (A)	4
8	# 902451	- Washer, 5/16 S/S Flat (A)	4
7	# 902434	- Bolt, 5/16-18 x 3/4" S/S Hex Head (A)	4
6	# 902431	- Screw, 10-32 x 3/16 S/S Machine (A)	6
5	# 902227	- Ring, Retainer - Hein. KD-5	1
4	# 902226	- Circuit Protectorr, Hein. KD-5	1
3	# 200399	- Kit, Start Switch	1
2	# 200400	- Kit, Stop Switch	1
1	# 202380	- Motor Housing, Marinator - CSA	1

ITEM NO.	MATERIAL DESCRIPTION	QTY REQ'D.								
<table border="1"> <tr> <td rowspan="2"> </td> <td> <b>Quality Industries</b>  <small>130 JONES BLVD. LAVERGNE, TN 37086 615-793-5000</small> </td> <td> <b>902466</b>  <b>Marinator Parts List</b> </td> <td> <b>FOOD SERVICE</b>  <small>DRAWNBY G.K. / T.W. DATE 8/27/98 SCALE None</small> </td> </tr> <tr> <td> <small>TOLERANCES UNLESS OTHERWISE SPECIFIED ANGLE = ± (x) = ± (.x) = ±</small> </td> <td> <small>CLASSIFIED MATERIAL This drawing or material is submitted to you with the confidence that it will be used only for your information on application engineering studies and shall never be used in any manner detrimental to our interest.</small> </td> <td> <small>APPROVED</small>  <small>RELEASED DATE</small> </td> <td> <small>FILE NO.</small>  <b>902466-A.dwg</b> </td> </tr> </table>				<b>Quality Industries</b> <small>130 JONES BLVD. LAVERGNE, TN 37086 615-793-5000</small>	<b>902466</b> <b>Marinator Parts List</b>	<b>FOOD SERVICE</b> <small>DRAWNBY G.K. / T.W. DATE 8/27/98 SCALE None</small>	<small>TOLERANCES UNLESS OTHERWISE SPECIFIED ANGLE = ± (x) = ± (.x) = ±</small>	<small>CLASSIFIED MATERIAL This drawing or material is submitted to you with the confidence that it will be used only for your information on application engineering studies and shall never be used in any manner detrimental to our interest.</small>	<small>APPROVED</small> <small>RELEASED DATE</small>	<small>FILE NO.</small> <b>902466-A.dwg</b>
	<b>Quality Industries</b> <small>130 JONES BLVD. LAVERGNE, TN 37086 615-793-5000</small>	<b>902466</b> <b>Marinator Parts List</b>		<b>FOOD SERVICE</b> <small>DRAWNBY G.K. / T.W. DATE 8/27/98 SCALE None</small>						
	<small>TOLERANCES UNLESS OTHERWISE SPECIFIED ANGLE = ± (x) = ± (.x) = ±</small>	<small>CLASSIFIED MATERIAL This drawing or material is submitted to you with the confidence that it will be used only for your information on application engineering studies and shall never be used in any manner detrimental to our interest.</small>	<small>APPROVED</small> <small>RELEASED DATE</small>	<small>FILE NO.</small> <b>902466-A.dwg</b>						